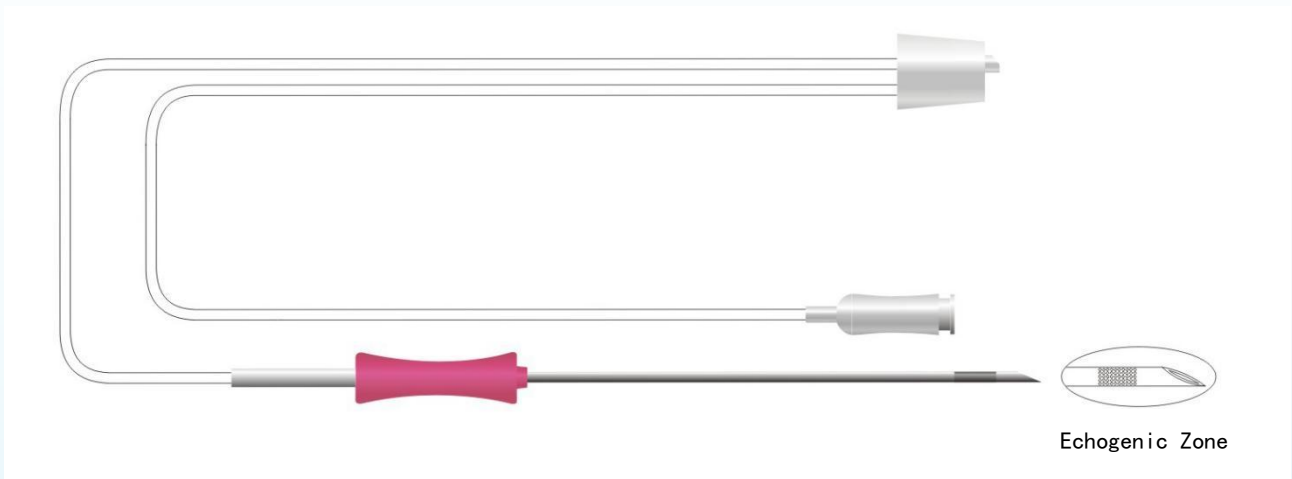


# Single Lumen Needle

Registration Certificate Number:

Shandong Equipment Registration 20152180129



**Application:** It is primarily used for transabdominal or transvaginal ultrasound-guided oocyte retrieval through follicular puncture.

## Features:



The pen needle is exceptionally sharp, which is helpful in reducing pain and facilitating wound recovery.



Highly echogenic zone on the end of the needle for enhanced visualisation under ultrasound.



The handle is designed for easy rotation of the needle tip and the thumb notch indicates the direction of the bevel of the needle tip.



The tubing is flexible. It can be restored to its original state after being folded during transport or handling.



Double-label design, the secondary label with key product information on could be peeled off and attached directly to the medical notes.

PRODUCT PARAMETER						
Model	Needle Diameter(G)	Needle Length (cm)	Aspiration Tubing (cm)	Vacuum Tubing (cm)	Features and Description	Packaging
C-351790-SL	17	35	90	68	To be used with the vacuum pump	Individual sterile packaging, 5 pcs/box

Address: Biological Science Park, No.1777,Dazheng road, High-tech Zone, Jinan, Shandong

Hotline: 0531-88285090

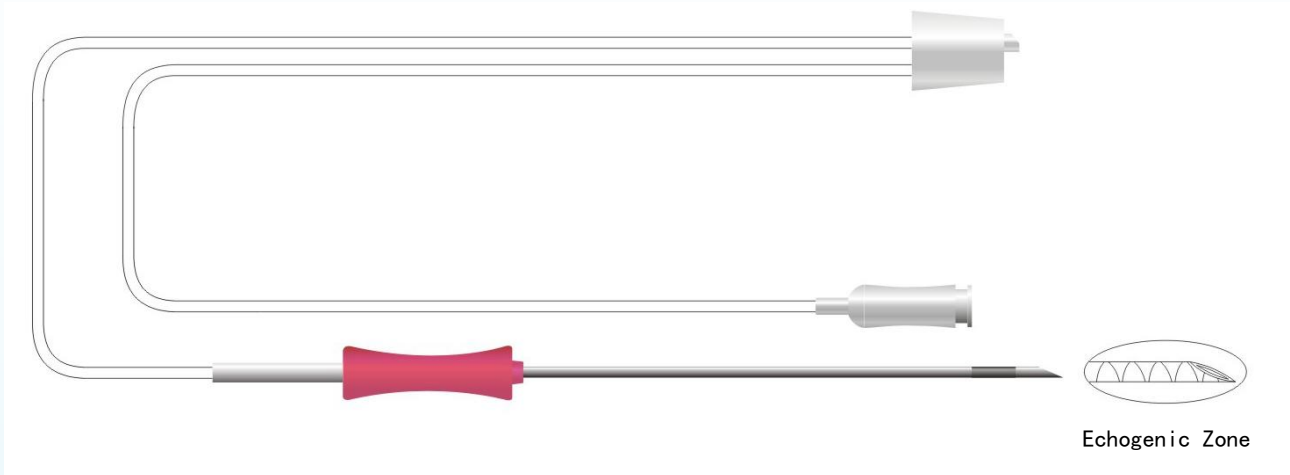
Website: [www.pccsi.cn](http://www.pccsi.cn)



# Single Lumen Needle

Registration Certificate Number:

Shandong Equipment Registration 20152180129



**Application:** It is primarily used for transabdominal or transvaginal ultrasound-guided oocyte retrieval through follicular puncture.

## Features:



The pen needle is exceptionally sharp, which is helpful in reducing pain and facilitating wound recovery.



Highly echogenic zone on the end of the needle for enhanced visualisation under ultrasound.



The handle is designed for easy rotation of the needle tip and the thumb notch indicates the direction of the bevel of the needle tip.



The tubing is flexible. It can be restored to its original state after being folded during transport or handling.



Double-label design, the secondary label with key product information on could be peeled off and attached directly to the medical notes.

PRODUCT PARAMETER						
Model	Needle Diameter(G)	Needle Length (cm)	Aspiration Tubing (cm)	Vacuum Tubing (cm)	Features and Description	Packaging
C-301790-SL	17	33	90	68	To be used with the vacuum pump	Individual sterile packaging, 5 pcs/box

Address: Biological Science Park, No.1777,Dazheng road, High-tech Zone, Jinan, Shandong

Hotline: 0531-88285090

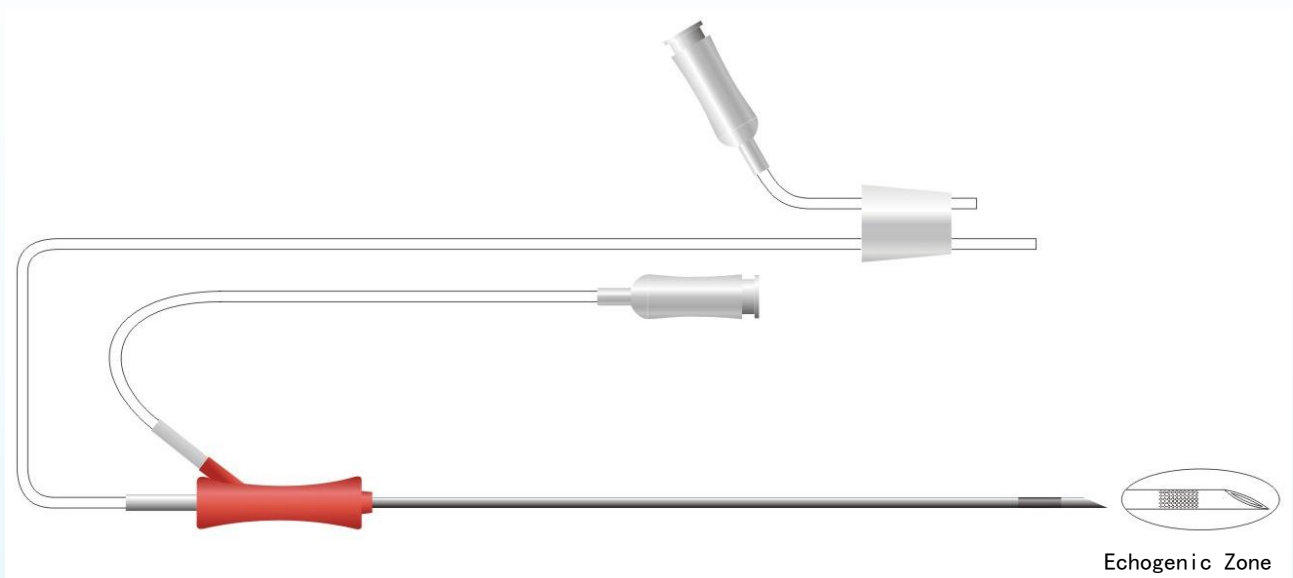
Website: [www.pccsi.cn](http://www.pccsi.cn)



# Double Lumen Needle

Registration Certificate Number:

Shandong Equipment Registration 20152180129



**Application:** It is primarily used for transabdominal or transvaginal ultrasound-guided oocyte retrieval through follicular puncture.

**Features:**



The pen needle is exceptionally sharp, which is helpful in reducing pain and facilitating wound recovery.



Highly echogenic zone on the end of the needle for enhanced visualisation under ultrasound.



Double lumen design allows flushing and suction to be carried out either simultaneously or intermittently.



The tubing is flexible. It can be restored to its original state after being folded during transport or handling.



Double-label design, the secondary label with key product information on could be peeled off and attached directly to the medical notes.

PRODUCT PARAMETER						
Model	Needle Diameter(G)	Needle Length (cm)	Aspiration Tubing (cm)	Flushing Tubing (cm)	Features and Description	Packaging
C-351680-PL	16	35	80	100	To be used with the vacuum pump	Individual sterile packaging, 10 pcs/box
C-351780-PL	17	35	80	100	To be used with the vacuum pump	Individual sterile packaging, 10 pcs/box

Address: Biological Science Park, No.1777,Dazheng road, High-tech Zone, Jinan, Shandong

Hotline: 0531-88285090

Website: www.pccsi.cn



# Embryo Transfer Catheter

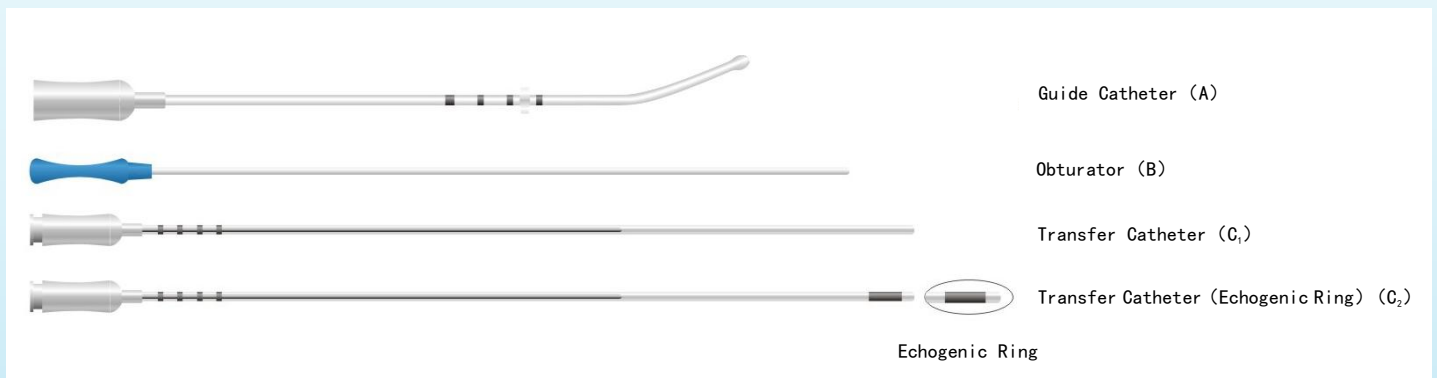
Registration Certificate Number:

Shandong Equipment Registration 20152180128

Application: For embryo transfer, delivering them vaginally to the uterus.

Features:

1. Guide catheter and transfer catheter are both marked with a scale to indicate depth of entry into the uterus and position of the embryo placement.
2. The product is equipped with an obturator which effectively avoids disturbances to the transfer which may be caused by cervical mucus.
3. Guide Catheter has a pre-curved tip for better ergonomics.
4. The rounded bulb tip is round and smooth, creating a non-invasive passage through the cervix, causing less irritation to the uterus.
5. A stopper is included for easy positioning and fixing of the Guide Catheter.
6. Transfer Catheter is made of soft and smooth materials with internal support design for more flexible handling.
7. Double-label design, the secondary label with key product information on could be peeled off and attached directly to the medical notes.
8. T-1811011-B has an echogenic ring near the tip to allow precise visualisation of the transferring site when viewed under ultrasound for optimising transferring conditions.



PRODUCT PARAMETER					
Model	Guide Catheter Length (mm)	Transfer Catheter Length (mm)	Features and Description	Component	Packaging
T-1811011	170	240	Standard, Obturator	A, B, C <sub>1</sub>	Individual sterile packaging, 10 pcs/box
T-1811011-B	170	240	Standard, Obturator, Echogenic Ring	A, B, C <sub>2</sub>	Individual sterile packaging, 10 pcs/box

Address: Biological Science Park, No.1777,Dazheng road, High-tech Zone, Jinan, Shandong

Hotline: 0531-88285090

Website: [www.pccsi.cn](http://www.pccsi.cn)



# IUI Catheter

Registration Certificate Number:

Shandong Equipment Registration 20152180128

Application: For sperms transfer, delivering it to the uterus via the vagina.

## I-1011-N



Features:

- 1.Ultra-soft material with an open head end.
- 2.Rounded and smooth tip of the Catheter allows for straightforward passage through the cervix with minimal damage to the endometrium.
- 3.Double-label design, the secondary label with key product information on could be peeled off and attached directly to the medical notes.

## I-1012-N



Features:

- 1.Ultra-soft material with two side apertures.
- 2.Rounded and smooth tip of the Catheter allows for straightforward passage through the cervix with minimal damage to the endometrium.
- 3.When the handle pattern is facing upwards, the lateral orifice is situated at the left and right of the catheter, allowing the sperm to be released at the mouth of the oviduct.
- 4.Double-label design, the secondary label with key product information on could be peeled off and attached directly to the medical notes.

## I-1822-D



Features:

- 1.Double-layered material with two side apertures.
- 2.Rounded and smooth tip of the Catheter allows for straightforward passage through the cervix with minimal damage to the endometrium.
- 3.Soft material at the distal end minimises damage to the cervix and endometrium, and rigid material at the proximal end contributes to better controllability.
- 4.When the handle pattern is facing upwards, the lateral orifice is situated at the left and right of the catheter, allowing the sperm to be released at the mouth of the oviduct.
- 5.The product is equipped with an obturator, and it assists in establishing an opening through the uterus, especially when passage to the cervix is difficult.
- 6.Double-label design, the secondary label with key product information on could be peeled off and attached directly to the medical notes.

PRODUCT PARAMETER				
Model	Catheter		Features and Description	Packaging
	Diamete (mm)	Length (mm)		
I-1011-N	1.8	100	An open head end	Individual sterile packaging, 10 pcs/box
I-1012-N	1.8	100	Two side apertures	Individual sterile packaging, 10 pcs/box
I-1822-D	2.2/1.8	180	Two side apertures、Double-layered、Obturator	Individual sterile packaging, 10 pcs/box

Address: Biological Science Park, No.1777,Dazheng road, High-tech Zone, Jinan, Shandong

Hotline: 0531-88285090

Website: [www.pccsi.cn](http://www.pccsi.cn)

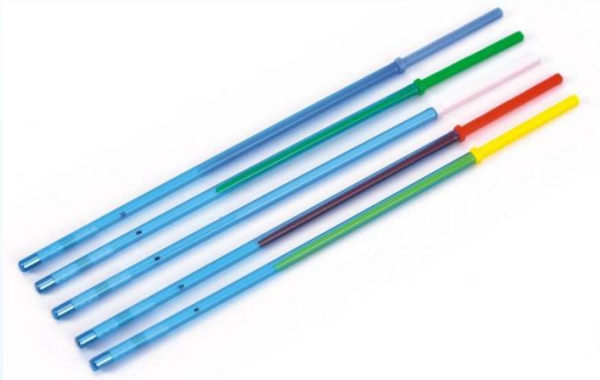


# Vitrification Device

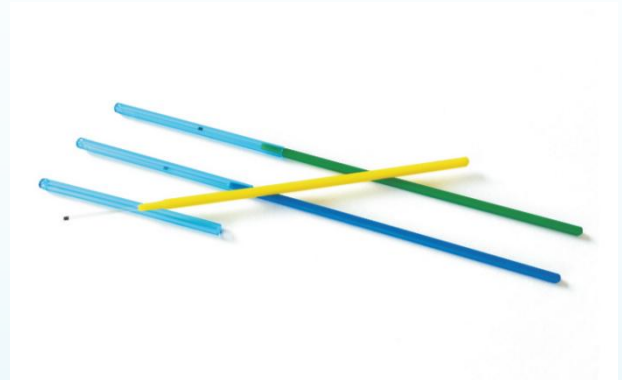
Registration Certificate Number:

Shandong Equipment Registration 20212181181

## Type I



## Type II



Application: For the storage of vitrified frozen human oocytes and embryos.

Features:

1. Patented surface treatment technology for sufficient embryo adhesion.
2. Good fit between the protective sleeve and the holding handle so that it is difficult to crack and separate in liquid nitrogen.
3. Type I : Metal counterweight at the bottom of the protective sleeve to prevent floating in liquid nitrogen. Type II: The bottom of the protective sleeve is closed.
4. Handle patterned to indicate the opposite direction of the black markings.
5. Sterile, the biological evaluation was qualified.
6. Variety of colours available for easy differentiation.



PRODUCT PARAMETER			
Model	Specification	Colour	Packaging
Type I	B-111	Red	1pcs/bag
Type I	B-112	Yellow	1pcs/bag
Type I	B-113	Blue	1pcs/bag
Type I	B-114	Green	1pcs/bag
Type I	B-115	White	1pcs/bag
Type I	B-153	Blue	5pcs/bag
Type I	B-156	Red, Yellow, Blue, Green, White	5pcs/bag
Type II	B-211	Red	1pcs/bag
Type II	B-212	Yellow	1pcs/bag
Type II	B-213	Blue	1pcs/bag
Type II	B-214	Green	1pcs/bag
Type II	B-215	White	1pcs/bag
Type II	B-251	Red	5pcs/bag
Type II	B-252	Yellow	5pcs/bag
Type II	B-253	Blue	5pcs/bag
Type II	B-254	Green	5pcs/bag
Type II	B-255	White	5pcs/bag
Type II	B-256	Red, Yellow, Blue, Green, White	5pcs/bag

Address: Biological Science Park, No.1777,Dazheng road, High-tech Zone, Jinan, Shandong

Hotline: 0531-88285090

Website: [www.pccsi.cn](http://www.pccsi.cn)



# Handling Pipette

Registration Certificate Number:

Shandong Equipment Registration 20192180723

**Application:** For removal of cumulus cell layers, transfer of oocytes and embryos.

**Features:**

1. Made of high-quality borosilicate glass for greater light transmission and chemical stability, avoiding adherence of cells and contaminants to the inner wall.
2. Straight and smooth with a polished tip to avoid damage to oocytes.
3. Individually sterilised protective packaging, with an advanced, unique, solid and shockproof design, guaranteeing the safety and stability of the product.



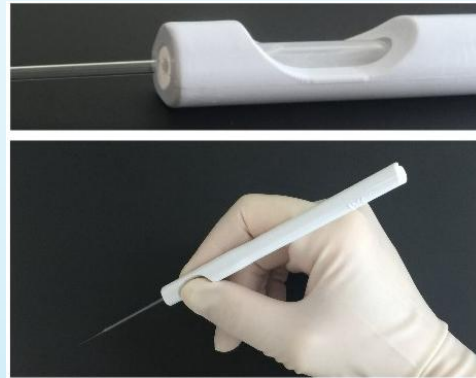
# Handling Pipette Grip

**Application:**

For the holding of PCC® handling pipette.

**Features:**

1. Individual sterile packaging, with pre-fitted inner tube.
2. Full control of rate of flow and liquid volume achieved by gently pressing the inner hose with the fingertips.
3. Ergonomic design and operation with the wrist resting on the table as a fulcrum for greater control and comfort.



PRODUCT PARAMETER					
Order Number	Product Name	Specification	Inner Diameter	Length	Packaging
DP120P	Handling Pipette	DP-120	120	7cm	Individual sterile packaging, 10 pcs/box
DP130P	Handling Pipette	DP-130	130	7cm	Individual sterile packaging, 10 pcs/box
DP140P	Handling Pipette	DP-140	140	7cm	Individual sterile packaging, 10 pcs/box
DP150P	Handling Pipette	DP-150	150	7cm	Individual sterile packaging, 10 pcs/box
DP160P	Handling Pipette	DP-160	160	7cm	Individual sterile packaging, 10 pcs/box
DP170P	Handling Pipette	DP-170	170	7cm	Individual sterile packaging, 10 pcs/box
DP180P	Handling Pipette	DP-180	180	7cm	Individual sterile packaging, 10 pcs/box
DPC-1000	Handling Pipette Grip	-	-	-	Individual sterile packaging

Address: Biological Science Park, No.1777,Dazheng road, High-tech Zone, Jinan, Shandong

Hotline: 0531-88285090

Website: [www.pccsi.cn](http://www.pccsi.cn)



# Endometrial Sampler

Registration Certificate Number:

Shandong Equipment Registration 20192180791

Application: For collecting histological and cytological samples of the endometrium.

Features:

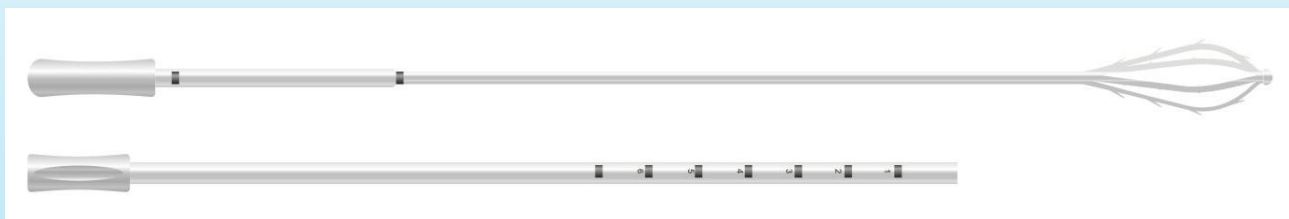
1. Easy to use: no probing or dilation required, quick and simple, suitable for outpatients
2. Painless: no anaesthetic required, minimal pain expected, good level of patient acceptance
3. Safe: non-invasive, with no risk of uterine perforation or cross-infection and no complications
4. Accurate: similar accuracy to conventional diagnostic curettage and can be used in most cases where diagnostic curettage is required.

## Type 3



- It can reach locations which are difficult for conventional tools to access, such as the uterine horns and both sides of the fallopian tubes, and has a high sampling accuracy rate.
- The obturator contains a double seal, ensuring sufficient negative pressure is exerted to obtain samples of sufficient volume.

## Type 4



- The morphology of the obturator matches that of the uterine cavity, allowing 360° coverage of the endometrium without a blind sampling zone.
- There are 4 toothed scrapers at the top of the obturator, which can be rotated to reach the basal endometrium without crossing it.

PRODUCT PARAMETER					
Order Number	Model	Specification	Guide Catheter Length (mm)	Guide Catheter External Diameter (mm)	Packaging
Z324532	Type 3	Z-32430	245	3.0	Individual sterile packaging, 25 pcs/box
Z415040	Type 4	Z-41540	150	4.0	Individual sterile packaging, 10 pcs/box

Address: Biological Science Park, No.1777,Dazheng road, High-tech Zone, Jinan, Shandong

Hotline: 0531-88285090

Website: [www.pccsi.cn](http://www.pccsi.cn)





# Labware for Assisted Reproduction Technology

Registration Certificate Number:

Shandong Equipment Registration 20192180892

Application: For collecting, manipulating, culturing or storing human germ cells and embryos in an in vitro environment.

## Features:

1. IVF specialised design.
2. Individual packaging.
3. Sterile, non-pyrogenic, non-cytotoxic, and non-embryotoxic.
4. A full range of models and specifications meeting all professional requirements.

## Culture Dish



Dish



Dish



Dish



Dish



Centre Well Dish



4 Wells Dish

PRODUCT PARAMETER			
Model	Specification	Size	Packaging
Dish	3501	35	1pcs/bag、280pcs/ctn
	3510	35	10pcs/bag、500pcs/ctn
Dish	5001	50	1pcs/bag、320pcs/ctn
	5010	50	10pcs/bag、500pcs/ctn
Dish	6001	60	1pcs/bag、200pcs/ctn
	6010	60	10pcs/bag、500pcs/ctn
Dish	10001	100	1pcs/bag、120pcs/ctn
	10010	100	10pcs/bag、200pcs/ctn
Centre Well Dish	5501	55	1pcs/bag、200pcs/ctn
	5510	55	10pcs/bag、500pcs/ctn
4 Wells Dish	6601	66	1pcs/bag、200pcs/ctn
	6605	66	5pcs/bag、200pcs/ctn

## Test Tube

PRODUCT PARAMETER			
Model	Specification	Size	Packaging
Test Tube	0501	5ml	1pcs/bag、800pcs/ctn
	0510	5ml	10pcs/bag、500pcs/ctn
	0525	5ml	25pcs/bag、500pcs/ctn
Test Tube	1401	14ml	1pcs/bag、400pcs/ctn
	1410	14ml	10pcs/bag、500pcs/ctn
	1425	14ml	25pcs/bag、500pcs/ctn
Test Tube	1501	15ml	1pcs/bag、400pcs/ctn
	1510	15ml	10pcs/bag、500pcs/ctn
	1525	15ml	25pcs/bag、500pcs/ctn



## Sperm Collection Container

PRODUCT PARAMETER			
Model	Specification	Size	Packaging
Sperm Collection Container	1102	60mm×63mm	1pcs/bag、200pcs/ctn



Address: Biological Science Park, No.1777,Dazheng road, High-tech Zone, Jinan, Shandong

Hotline: 0531-88285090

Website: [www.pccsi.cn](http://www.pccsi.cn)



# Warmer

Registration Certificate Number:

Shandong Equipment Registration 20212180644

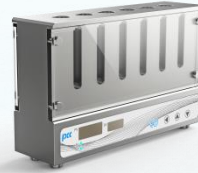
Application: For maintaining the temperature of gametes and embryos during assisted reproduction.

## MT-06/MT-12 Test Tube Warmer

For maintaining the temperature of the oocytes in test tubes during oocyte retrieval, with the capacity holding 6/12 14ml test tubes.

Features:

1. Front and rear visibility for easier observations.
2. Simultaneous display of set temperature and actual temperature.
3. Integrated design for even temperature transfer,, preventing liquid from dripping into the device.
4. Magnetic fixings on the front and rear panels for quick disassembly, easy cleaning and disinfection.



MT-06



MT-12

## MP-300

Place on a clean bench top to maintain the temperature of the gametes and embryos in the culture dish.

Features:

1. Metal warmer plate with non-slip edge.
2. Simultaneous display of set temperature and actual temperature.
3. Large working surface for stable handling.
4. Even surface temperature.



## GP-200

Place on a stereomicroscope stage to maintain the temperature of the gametes and embryos in the culture dish.

### Features:

1. Relatively large heating area ensures a large operating area.
2. Simultaneous display of set temperature and actual temperature.
3. Special heating glass for uniform temperature and a high level of light transmission for clear observation.
4. Universal compatibility for existing microscope brands on the market.



## GP-110

Place on a inverted microscope stage to maintain the temperature of the gametes and embryos in the culture dish.

### Features:

1. Relatively large heating area ensures a large operating area.
2. Simultaneous display of set temperature and actual temperature.
3. Special heating glass for uniform temperature and a high level of light transmission for clear observation.
4. Universal compatibility for existing microscope brands on the market.



PRODUCT PARAMETER					
Model	MT-06	MT-12	MP-300	GP-200	GP-110
Volume	6 test tubes	12 test tubes	-	-	-
Size	220mm×60mm×140mm	220mm×60mm×140mm	200 mm×300 mm×20 mm	200mm×180mm×8mm	Φ 110 mm
Temperature Setting Range	+33.0°C~+39.9°C	+33.0°C~+39.9°C	+33.0°C~+39.9°C	+36.5°C~+38.5°C	+36.5°C~+38.5°C
Display Accuracy	0.1°C	0.1°C	0.1°C	0.1°C	0.1°C
Temperature Display	Set/actual dual display	Set/actual dual display	Set/actual dual display	Set/actual dual display	Set/actual dual display
Indicator	When the actual temperature is 1° C above the set temperature, the indicator light will always be on until the temperature is lowered again.				

Address: Biological Science Park, No.1777,Dazheng road, High-tech Zone, Jinan, Shandong

Hotline: 0531-88285090

Website: www.pccsi.cn



# Vacuum Pump

Registration Certificate Number:

Shandong Equipment Registration 20222141122

**Application:** Provides a source of negative pressure for retrieving body fluids and cells (mainly oocytes).

**Features:**

1. Ergonomically designed, being easy and comfortable to operate.
2. When the oocyte retrieval needle is blocked, the negative pressure one-touch boost key can be activated to instantly obtain a temporary negative pressure of  $-500\text{mmHg}$ , thereby releasing any blockage.
3. The silicone seal on the surface of the device is designed to prevent the risk of disinfecting solution from dripping into the device, which results in greater safety.
4. The foot switch is sensitive enough to easily control, allowing both hands to be used for other operations.
5. A disposable vacuum tubing is provided (sterile and 2500mm long) to meet the requirements of clinical applications, and is fitted with a filter to prevent liquid inhalation.



PRODUCT PARAMETER					
Model	Range of Negative Pressure		Negative Pressure Precision		Performance Classification
	mmHg Display Mode	kPa Display Mode	mmHg Display Mode	kPa Display Mode	
VE-500	$-10\text{mmHg} \sim -500\text{mmHg}$ Adjusting Gradients 1mmHg	$-1\text{kPa} \sim -67\text{kPa}$ Adjusting Gradients 0.1kPa	$\pm 5\text{mmHg}$	$\pm 0.7\text{kPa}$	High Negative Pressure /Low Flow ( $< 20\text{L}/\text{min}$ )

## Ordering Information

Product Name	Model	Notes
Vacuum Pump	VE-500	Consists of main unit, disposable vacuum tubing, power cord, and foot switch
Disposable Vacuum Tubing	VCP-2500	2500mm, individual sterile packaging, 10 pcs/box

Address: Biological Science Park, No.1777,Dazheng road, High-tech Zone, Jinan, Shandong

Hotline: 0531-88285090

Website: [www.pccsi.cn](http://www.pccsi.cn)

